

# Olympic and Paralympic Games Transport and Travel Impacts

## Hounslow Summary

Report

June 2012

**Prepared for:**  
WestTrans  
Perceval House  
14-16 Uxbridge Road  
Ealing, W5 2HL

**Prepared by:**  
Steer Davies Gleave  
28-32 Upper Ground  
London SE1 9PD

+44 (0)20 7910 5000  
[www.steerdaviesgleave.com](http://www.steerdaviesgleave.com)



## CONTENTS

<b>1</b>	<b>INTRODUCTION .....</b>	<b>1</b>
<b>2</b>	<b>EVENTS AND SPECIAL ARRANGEMENTS THAT WILL IMPACT ON HOUNSLOW .....</b>	<b>2</b>
	The Olympic and Paralympic Route Networks (ORN/PRN).....	2
	Olympic Torch Relay .....	3
	Olympic and Paralympic Venues and Events .....	3
	Calendar of Events.....	3
<b>3</b>	<b>TRAVELLING IN AND AROUND HOUNSLOW DURING THE GAMES.....</b>	<b>7</b>
	By Road .....	7
	Using Public Transport .....	12
	Travelling through Central London .....	14
<b>4</b>	<b>BEING PREPARED - PLAN AHEAD .....</b>	<b>15</b>

## FIGURES

Figure 2.1	Olympic Events and Special Arrangements Around Hounslow - 23 <sup>rd</sup> July-12 <sup>th</sup> August .....	5
Figure 2.2	Paralympic Events and Special Arrangements Around Hounslow - 27 <sup>th</sup> August-9 <sup>th</sup> September.....	6
Figure 3.1	Olympic and Paralympic Route Network - Hounslow, A4 Great West Road.....	8
Figure 3.2	Olympic and Paralympic Route Network - Hounslow and Hammersmith & Fulham, A4 Great West Road .....	9
Figure 3.3	Predicted Impact of the Cycling Road Events, Saturday 28 <sup>th</sup> and 29 <sup>th</sup> July ....	11



## 1 Introduction

- 1.1 The London 2012 Olympic and Paralympic Games are Britain's largest peacetime logistical events. In summer 2012, Olympic events at venues throughout London will attract 9 million spectators, with the number of Paralympic Games spectators expected to total 2 million.
- 1.2 The extra demand from athletes, spectators, the wider Games family and the media immediately before and during Games time will put additional strain on London's transport system. To manage the transport challenges associated with the extra demand, there will be some changes to the way in which the transport network operates during the Games period. These special measures will be largely focused on areas in Central and East London where the majority of the Games venues are. However some changes, such as the Olympic and Paralympic Route Networks, will have a far greater impact and will affect areas beyond the core Games areas.
- 1.3 Travel in Hounslow will be affected during the Games, with some roads and public transport routes expected to be busier than usual. It is important that businesses and individuals start planning ahead now to ensure that they understand the expected impact on their usual journeys, and avoid or minimise disruption and delay. This can be achieved by:
- **Reducing** the need to travel;
  - **Retiming** journeys to avoid peak times and restrictions;
  - **Rerouting** journeys; or
  - **Revising** the mode of transport used.
- 1.4 This note sets out the expected transport impacts of Games operations on journeys into, around and out of Hounslow, identifying the particularly busy areas and times when travelling will be more difficult. The detail presented here has been collated from the information prepared by the Olympic Delivery Authority and Transport for London. Further information on the transport impacts of the Games can be found at [www.getaheadofthegames.com](http://www.getaheadofthegames.com), and [www.tfl.gov.uk/london2012](http://www.tfl.gov.uk/london2012).

## 2 Events and Special Arrangements that will Impact on Hounslow

### The Olympic and Paralympic Route Networks (ORN/PRN)

- 2.1 The Olympic Route Network and Paralympic Route Network (ORN and PRN) are networks of core routes between Central London and the Olympic Park at Stratford, venue routes (which link all the venues, nationwide), training routes (linking training venues), and an alternative ORN, which will be used if the core is unavailable.
- 2.2 The ORN and PRN will enable key participants, such as athletes and officials, to be fast tracked around London between venues and their accommodation. In order to ensure reliable journey times for the Games family, some changes to the normal operations of key routes are required. These changes will be temporary and proportionate: the ORN and PRN will only operate when needed, and they will be determined by demand, location and competition schedules. The scale and nature of the traffic management measures put in place along the ORN and PRN will vary according to the local traffic environment, but may include combinations of the following:
- Changes to traffic signal timings;
  - Restricted turns at specified junctions;
  - Side road closures to general traffic;
  - Suspension of parking and waiting bays; and
  - Suspension of some pedestrian crossings.
- 2.3 The ORN and PRN restrictions will operate from 6am to midnight, but the routes (with the exception of marked Games Lanes) will still be open to all road users at all times for the duration of the Games.
- 2.4 In Hounslow, the ORN and PRN will operate to facilitate Games family journeys to the rowing (Eton Dorney) and sailing (Weymouth and Portland) competition event venues from Central London. The ORN and PRN will be operational on the A4 Great West Road and on the M4 through Hounslow. The specific detail of the measures and restrictions on these routes is presented in the next section.
- 2.5 The operations of the ORN and PRN in Hounslow will mean that key routes have to accommodate more traffic. Whilst the specific ORN and PRN measures will ensure that traffic is kept moving along these routes, there may be some localised queuing and congestion as usual traffic is displaced onto other roads. Day by day information on the expected impacts of the ORN and PRN on London's roads is available at [www.getaheadofthegames.com/travelinaffectedareas/city/london-driving-and-roads.html](http://www.getaheadofthegames.com/travelinaffectedareas/city/london-driving-and-roads.html).

### Olympic Torch Relay

- 2.6 The Olympic Torch will pass through every London Borough between 21<sup>st</sup> and 27<sup>th</sup> July. Large numbers of spectators are expected to view the relay and this will impact on movements along the Torch Relay route.
- 2.7 The Olympic Torch Relay will pass through Hounslow on Tuesday 24<sup>th</sup> July. The Torch will travel in a police convoy with rolling road closures through Brentford and Isleworth from approximately 11.30am to 1pm. The route is as follows:
- Westbound on High Street/London Road (A315) from Kew Bridge;
  - Northbound on Lampton Road (A3005) to Lampton Park.
- 2.8 No large-scale road closures will be in effect in Hounslow, but the rolling road closures will necessitate some localised diversions as the relay progresses through the borough.

### Olympic and Paralympic Venues and Events

- 2.9 Whilst there are no Olympic or Paralympic venues in Hounslow, there are a number of venues in neighbouring boroughs which will affect journeys in and through Hounslow. These venues/locations are:
- Eton Dorney (Buckinghamshire), the venue for Olympic rowing and canoe sprints from 28<sup>th</sup> August to 11<sup>th</sup> August, and Paralympic rowing from 31<sup>st</sup> August to 2<sup>nd</sup> September;
  - Earl's Court (Hammersmith and Fulham), where volleyball is taking place from 28<sup>th</sup> July to 12<sup>th</sup> August;
  - Olympic Family and spectator arrivals and departures at Heathrow Airport; and
  - Roads in Richmond Upon Thames and Kingston, which will form part of the cycling road race route on 28<sup>th</sup> and 29<sup>th</sup> July.
- 2.10 On days that events take place in surrounding areas Hounslow will be busier than usual as spectators pass through the borough to access venues, or as normal traffic diverts to avoid the busiest routes around the transport hotspots.

### Calendar of Events

- 2.11 The Games time events and special arrangements that are likely to have some impact on travel into, around and out of Hounslow are shown in the calendar that follows.





FIGURE 2.1 OLYMPIC EVENTS AND SPECIAL ARRANGEMENTS AROUND HOUNSLOW - 23<sup>RD</sup> JULY-12<sup>TH</sup> AUGUST

	Monday	Tuesday	Wednesday	Thursday	Friday	Saturday	Sunday
July	23	24	25	26	27	28	29
		Olympic Torch Relay events in West London - rolling road closures	ORN in operation	ORN in operation	ORN in operation Olympic Games opening ceremony	ORN in operation 09.30-14.00 Rowing events at Eton Dorney 09:30-23:00 Volleyball events at Earl's Court 10:00-16:15 Cycling road event - delays on road network in south west London	ORN in operation 09.30-12.00 Rowing events at Eton Dorney 09:30-23:30 Volleyball events at Earl's Court 12:00-16:15 Cycling road event - delays on road network in south west London
July	30	31	1	2	3	4	5
	ORN in operation 09.30-11.00 Rowing events at Eton Dorney 09:30-23:30 Volleyball events at Earl's Court	ORN in operation 09.30 - 13.00 Rowing events at Eton Dorney 09:30-23:30 Volleyball events at Earl's Court	ORN in operation 09.30-11.30 Rowing events at Eton Dorney 09:30-23:30 Volleyball events at Earl's Court	ORN in operation 09.30-13.00 Rowing events at Eton Dorney 09:30-23:30 Volleyball events at Earl's Court	ORN in operation 09.30 12.30 Rowing events at Eton Dorney 09:30-23:30 Volleyball events at Earl's Court	ORN in operation 09.30-12.00 Rowing events at Eton Dorney 09:30-23:30 Volleyball events at Earl's Court	ORN in operation 09:30-23:30 Volleyball events at Earl's Court
August	6	7	8	9	10	11	12
	ORN in operation 09.30-12.00 Canoe sprint events at Eton Dorney 09:30-23:30 Volleyball events at Earl's Court	ORN in operation 09.30-12.00 Canoe sprint events at Eton Dorney 13:00-22:30 Volleyball events at Earl's Court	ORN in operation 09.30-11.00 Canoe sprint events at Eton Dorney 14:00-23:00 Volleyball events at Earl's Court	ORN in operation 09.30-11.00 Canoe sprint events at Eton Dorney 15:00-21:00 Volleyball events at Earl's Court	ORN in operation 09.30-12.00 Canoe sprint events at Eton Dorney 15:00-21:00 Volleyball events at Earl's Court	ORN in operation 09.30-11.00 Canoe sprint events at Eton Dorney 11:30-20:40 Volleyball events at Earl's Court	ORN in operation 09:30-15:10 Volleyball events at Earl's Court Olympic Games closing ceremony

Hounslow Summary

FIGURE 2.2 PARALYMPIC EVENTS AND SPECIAL ARRANGEMENTS AROUND HOUNSLOW - 27<sup>TH</sup> AUGUST-9<sup>TH</sup> SEPTEMBER

	Monday	Tuesday	Wednesday	Thursday	Friday	Saturday	Sunday
Aug/Sept	27	28	29	30	31	1	2
			PRN in operation Paralympic Games opening ceremony	PRN in operation	PRN in operation 09.30-12.00 Rowing events at Eton Dorney	PRN in operation 09.30-12.00 Rowing events at Eton Dorney	PRN in operation 09.30-12.30 Rowing events at Eton Dorney
September	3	4	5	6	7	8	9
	PRN in operation	PRN in operation	PRN in operation	PRN in operation	PRN in operation	PRN in operation	PRN in operation Paralympic Games closing ceremony

## 3 Travelling in and Around Hounslow During the Games

- 3.1 The additional demand on the transport network created by Games related journeys will present significant challenges for London. In Hounslow, journeys will be affected by the operations of the ORN and PRN, and some journeys made by public transport will be busier than usual or subject to delay or diversion.

### By Road

#### *All Road Journeys*

- 3.2 The ORN and PRN will be in effect in Hounslow to provide safe, secure and efficient access for key Games participants between Central London and the competition venue at Eton Dorney. It will operate on the M4, and on the A4 Great West Road from the M4 junction through to Hammersmith. Maps showing the detail of the changes to the road network in Hounslow are presented in **Error! Reference source not found.** and **Error! Reference source not found.**. The specific changes on these routes are as follows:

- Games Lanes will be operational westbound and eastbound on the Great West Road. Games Lanes will be closed to general traffic and will be reserved for use by accredited Games vehicles only between 6am and 8pm. There will be penalties for vehicles that use the Games Lanes during operational hours.
- There are no proposed changes to the way in which the M4 operates during its use as part of the ORN/PRN, however a shared bus and Games lane is being considered. If this lane is instated it will only be used on competition dates, and restrictions will be removed as soon as they are no longer required.
- There will be no right turns permitted westbound on Ellesmere Road into Sutton Court Road.
- There will be no right turns permitted eastbound on Great West Road into Netheravon Road South.

- 3.3 The additional traffic on the ORN and PRN and associated restrictions will result in some displacement of traffic onto alternative routes through Hounslow.

# Hounslow Summary

FIGURE 3.1 OLYMPIC AND PARALYMPIC ROUTE NETWORK - HOUNSLOW, A4 GREAT WEST ROAD

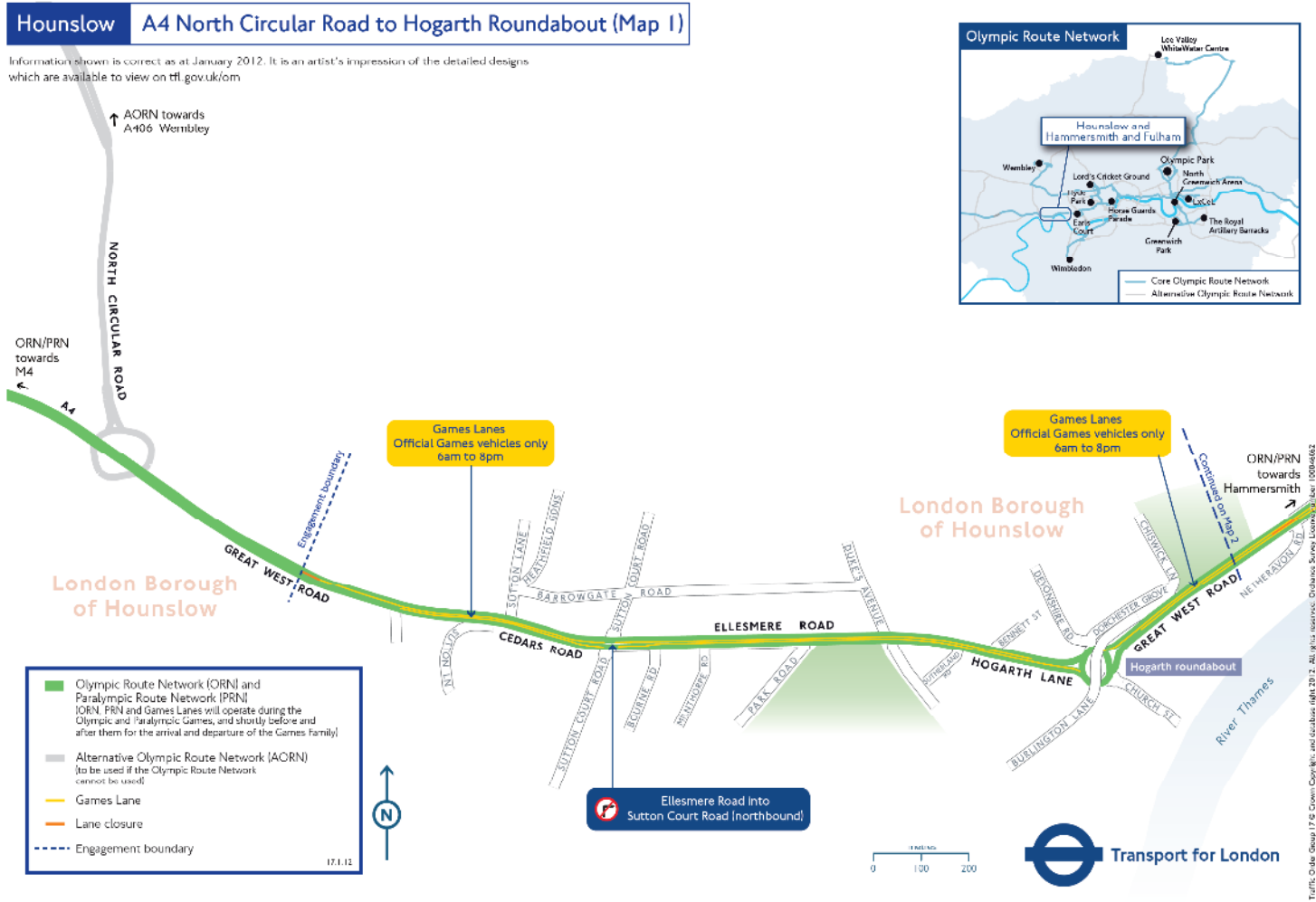
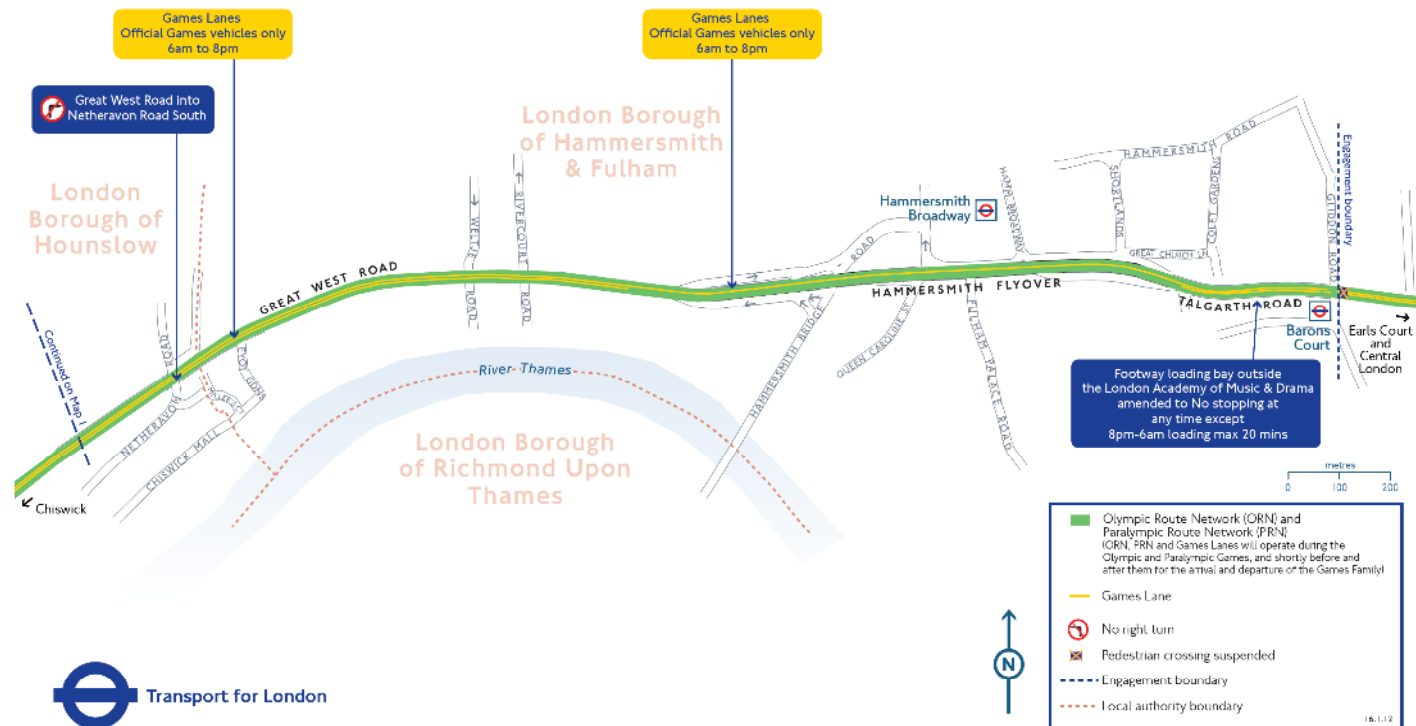


FIGURE 3.2 OLYMPIC AND PARALYMPIC ROUTE NETWORK - HOUNSLOW AND HAMMERSMITH & FULHAM, A4 GREAT WEST ROAD

Hounslow and Hammersmith & Fulham A4 Hogarth Roundabout to Talgarth Road (Map 2)

Information shown is correct as at January 2012. It is an artist's impression of the detailed designs which are available to view on [tfl.gov.uk/om](http://tfl.gov.uk/om)

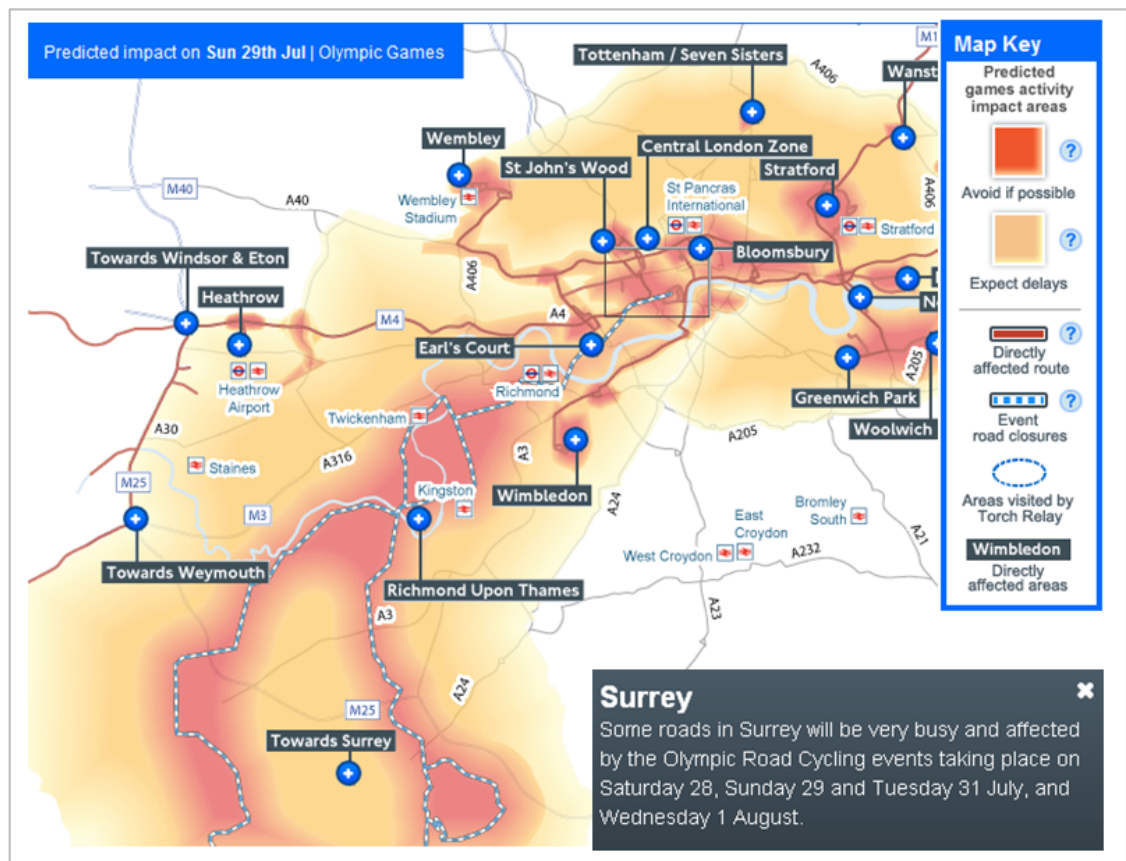


Traffic Order Group 17 © Crown Copyright and database right 2012. All rights reserved. Ordnance Survey Licence number 100046061



- 3.4 The predicted impact of the Games on London has been modelled to highlight the worst affected areas of the road network. The results of the modelling show that Hounslow will be busy, particularly in the west of the borough towards Heathrow Airport and in the areas in the vicinity of the ORN and PRN. Roads that will be particularly affected in the Heathrow area include The Parkway (A312), southbound, and The Causeway/Green Lane (A312), northbound. Some delays should therefore be expected to journeys throughout both the Olympics and Paralympic Games.
- 3.5 The worst affected days on the wider road network in Greater London will be on Saturday 28<sup>th</sup> July and Sunday 29<sup>th</sup> July when the cycling road events take place. The route extends from Central London through the south west towards the Box Hill circuit in Surrey and there will therefore be extensive traffic management measures to divert the usual traffic from the official route. Motorists will be advised to avoid the south west area, using the M25 as an alternative where possible. The predicted impacts on the road network are shown in Figure 3.3.

**FIGURE 3.3 PREDICTED IMPACT OF THE CYCLING ROAD EVENTS, SATURDAY 28<sup>TH</sup> AND 29<sup>TH</sup> JULY**



**Freight Movements**

- 3.6 The movement of freight by road will be subject to the same impacts as those experienced by usual traffic on the road network in Hounslow. Transport for London have developed specific advice for the freight industry regarding Games time operations. This can be accessed at [www.tfl.gov.uk/gettingaround/london2012/22910.aspx](http://www.tfl.gov.uk/gettingaround/london2012/22910.aspx).

## Hounslow Summary

### Using Public Transport

- 3.7 Journeys in Hounslow by public transport will be less affected by the Games than those made in Central London, however some routes and lines are still expected to be busier than usual.

#### *Bus*

- 3.8 There are no planned changes to bus routes that operate through Hounslow, however it is likely that some services during the Games will be subject to delay due to the congestion associated with the ORN and PRN.

#### *London Underground*

- 3.9 Detailed information on the anticipated impact of the Games on all London Underground lines can be accessed at [www.getaheadofthegames.com/travelinaffectedareas/city/london-public-transport.html](http://www.getaheadofthegames.com/travelinaffectedareas/city/london-public-transport.html).

#### *Piccadilly Line*

- 3.10 The Piccadilly Line will be busier than usual as spectators travel to and from events at Earl's Court, Hyde Park and other Central London venues.
- 3.11 The busiest section will be from Earl's Court to King's Cross from 27<sup>th</sup> July to 12<sup>th</sup> August, and the section of the line that serves Hounslow has not been highlighted as a section which is likely to be significantly busier than usual.

#### *District Line*

- 3.12 The District line will provide a key route to the Olympic Park via West Ham, as well as serving the Olympic venues at Earl's Court and Wimbledon.
- 3.13 The section of the District line that serves Hounslow stations is not expected to be significantly busier than usual. The busiest section will be from Tower Hill to West Ham, and South Kensington to Southfields. The South Kensington to Earl's Court section will be busiest between 6<sup>th</sup> and 12<sup>th</sup> August.
- 3.14 For passengers who make journeys using the District line, it is advised that, where possible, travel is completed outside of the AM and PM peak periods.

#### *London Overground*

- 3.15 London Overground services that serve Gunnersbury are **not** expected to be significantly busier than usual. Sections of the line between Clapham Junction and Shepherd's Bush, and between Highbury and Islington and Stratford will be busier than usual throughout the Olympic and Paralympic Games.
- 3.16 Passengers who normally use the London Overground to travel in the busiest sections highlighted above are advised to complete their travel before 8am or after 11am, or before 4pm or after 8pm on weekdays.

#### *National Rail*

- 3.17 A normal train service will operate between London Waterloo and Windsor & Eton Riverside, supplemented by longer trains at weekends as well as some early morning additional services. National Rail services through Hounslow will be busier than usual on



days where competition events are taking place at Eton Dorney, particularly in the early morning and mid-afternoon.

### ***Busy Interchange Stations***

3.18 Whilst sections of National Rail and London Underground lines that pass through Hounslow are not expected to be prohibitively busy during the Games, many of the key interchange stations from which these services are accessed will be very busy. Delays at these stations will mean that journeys between Hounslow and Central London will be affected. The details of the affected stations relevant to Hounslow services are as follows:

- **Earl's Court Underground station** (interchange point for passengers using the District line): this station will be exceptionally busy throughout the Olympic Games as it is a venue station for Olympic volleyball events at Earl's Court. It will be busier from midday, and in the early and late evening from Saturday 28<sup>th</sup> July to Sunday 12<sup>th</sup> August.

  - To ensure the station does not become overcrowded, there will be a one-way system in operation at Earl's Court at all times throughout the Olympic Games. Entry to the station will be via the Warwick Road ticket hall. Exit from the station will be via the Earl's Court Road ticket hall.
  - On Monday 30<sup>th</sup> July to Wednesday 1<sup>st</sup> August between 10.30am and 11.30am passengers may have to wait between 15 and 30 minutes to board a service.
- **Green Park Underground station** (interchange point for passengers using the Piccadilly line): this station will be exceptionally busy throughout the Olympic Games as it will be a key access point for events in Hyde Park and other Central London Games venues.

  - The station is expected to be busiest between 5.50-8pm throughout the Olympic Games, and between 1-5pm on Saturday 28<sup>th</sup> and Sunday 29<sup>th</sup> July, between 2.30-7.30pm on Wednesday 1<sup>st</sup> August. Passengers may have to wait more than 30 minutes to board a service during these times.
  - The station will also be particularly busy on Saturday 4<sup>th</sup> August, between 6-9.30pm on Wednesday 8<sup>th</sup> August, and between 12.30-3pm and 5.50-6.30pm on Saturday 11<sup>th</sup> August.
  - During the Paralympic Games, the station will be busier than usual in the evening weekday peak from 5.30-7pm.
- **Waterloo Underground station and Waterloo Rail station** (interchange between National Rail services from/to Hounslow and London Underground lines).

  - Waterloo Underground station will be exceptionally busy in the weekday morning peak from 7-10am, and significantly busier than usual in the PM peak during the Olympic Games, and between 11am-1-30pm on Monday 6<sup>th</sup> August.
  - Waterloo Underground station will also be busier than usual at weekends throughout the Games.
  - During the busiest times at Waterloo Underground station, passengers may have to wait longer than 30 minutes to board a train.
  - Waterloo Rail station will be similarly busy throughout the Olympic and Paralympic Games. In addition to the busiest times identified above, the rail

## Hounslow Summary

station will be particularly busy between 5-7pm on Wednesday 1<sup>st</sup> August and 10.30pm-12am on Thursday 9<sup>th</sup> August.

- Clapham Junction Rail station (interchange for National Rail and London Overground services): the station will be busier than usual throughout the Olympic and Paralympic Games as it is a key interchange station for spectators heading to events in London.
  - The station will be particularly busy during the weekday morning and evening peaks between 7-8.30am and 5.30-7.30pm.

3.19 Passengers who access Hounslow via these stations are advised to avoid the stations during the predicted busiest times, either by retiming their journey, or by using an alternative route or mode.

### Travelling through Central London

3.20 All travel in Central London will be affected to some extent during the Games period, and the impacts will vary by day, time and mode of travel. The interactive planning tools at [www.getaheadofthegames.com](http://www.getaheadofthegames.com) show the expected impacts by day and by time, and are therefore an invaluable resource for avoiding significant delay on normal journeys.

## 4 Being Prepared - Plan Ahead

- 4.1 The information that has been made available on the anticipated transport impacts of the Games has been prepared by adding expected spectator numbers to 'background' data - the impacts of normal travel habits during the summer months.
- 4.2 The information shows the anticipated impacts based on a scenario in which all transport users continue to travel as normal, however the most severe impacts can be minimised or mitigated if all users - businesses and individuals - are flexible about their travel arrangements and plan ahead to avoid the worst affected hotspot areas.
- 4.3 For those travelling in Hounslow and throughout London during the Games, disruption can be avoided by implemented the 'four Rs':
- **Reducing** the need to travel;
  - **Retiming** journeys to avoid peak times and restrictions;
  - **Rerouting** journeys; or
  - **Revising** the mode of transport used.
- 4.4 For individuals, it is advised that essential journeys during the Games are planned in advance using the information at [www.getaheadofthegames.com](http://www.getaheadofthegames.com).
- 4.5 Businesses throughout London are being supported by Transport for London's Travel Advice for Business programme, however all businesses are encouraged to develop an action plan to ensure that the impacts of the Games on employees, deliveries, customers and visitors are considered, and that the business is well prepared for Games related impacts. The [Travel Advice for Business handbook](#) is a useful resource for businesses that identifies a range of potential solutions for different business types.



CONTROL SHEET

Project/Proposal Name Olympic and Paralympic Games Transport and Travel Impacts  
Document Title Hounslow Summary  
Client Contract/Project No. [Click here to enter text.](#)  
SDG Project/Proposal No. 22477401

ISSUE HISTORY

Issue No.	Date	Details
1	30/04/2012	Draft for Client Review
2	13/06/2012	Final Version

REVIEW

Originator Fiona Jenkins  
Other Contributors  
Review by: Print Lisa Buchanan  
Sign



DISTRIBUTION

Client: WestTrans  
Steer Davies Gleave:

